



FOWLERVILLE COMMUNITY SCHOOLS



Fowlerville K-2 Elementary: Project Activities

- BCC and BFS have approved all disciplines.
- Roofing is in progress on the east side of the building.
- Interior flatwork began on the east side of the building.
- Column framing and plywood was completed on the east side of the building. Brick is in progress.
- Classroom entryway masonry and door frame install are in progress.
- Window install began in mid-February.
- Consumer's Energy installed their gas lines and service is now on.
- DTE installed the transformer in preparation for install of switchgear.
- All long lead items appear to still be on track. Boilers, pumps, RTUs, and VUVs have been received.

Lead times are updated weekly and are reflected in the construction schedule.

Schedule Status – Look Ahead:

- Interior wall framing, interior plumbing and electrical, block filler, and overhead MEP continues around the building.

Miscellaneous:

- A training as part of the AGC MIOSHA Alliance Program will be held March 15, 2024 on the topic of lift safety.

HVAC Project Planning:

- The High School and Junior High HVAC project documents were issued for bids on January 10, 2024
- The pre-bid meetings for both the High School and Junior High were held on January 17, 2024.
- Bids for the pre-purchase of the High School chillers, chiller pumps, and VFDs were due on February 13, 2024. The remainder of the project will be bid at a later date.
- The bid opening for the Junior High will take place at the Junior High media center on March 13, 2024.

Project Progress Photographs



Exterior view of windows.



Windows installed and block filler on walls.

Project Progress Photographs



Transformer installed.



Electrical conduit install in hallway.

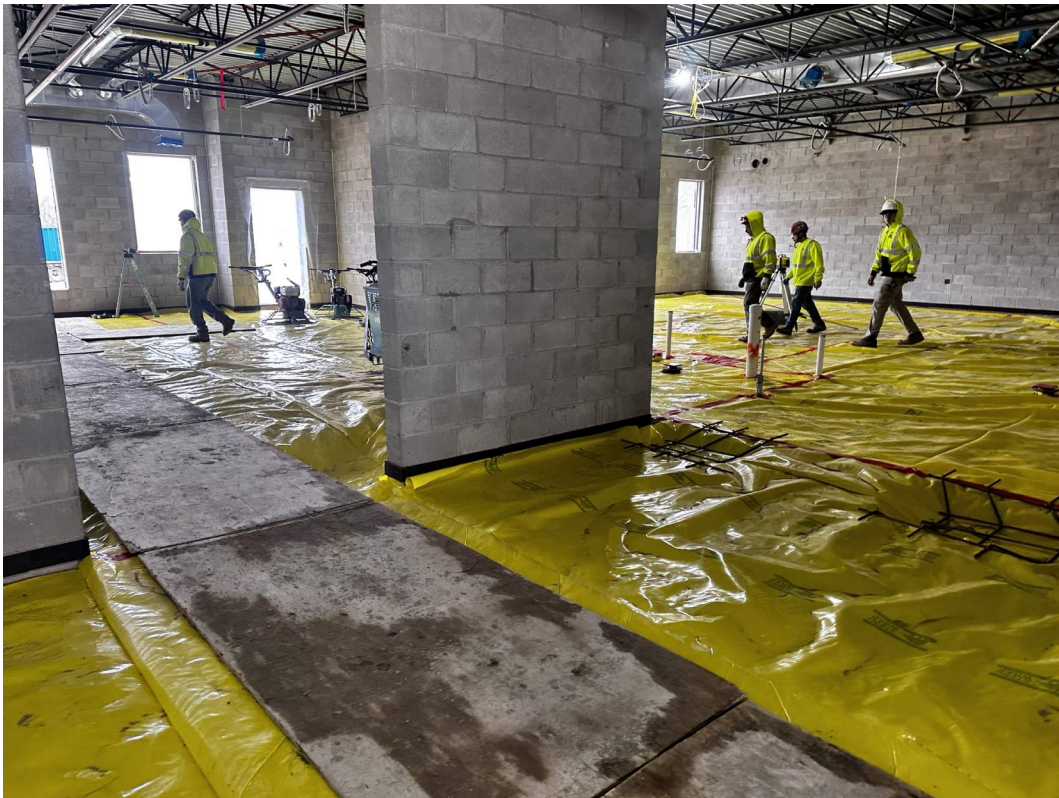


Electrical conduit installed in sand prior to concrete on east side of building.

Project Progress Photographs



Sand prep prior to concrete in a classroom.

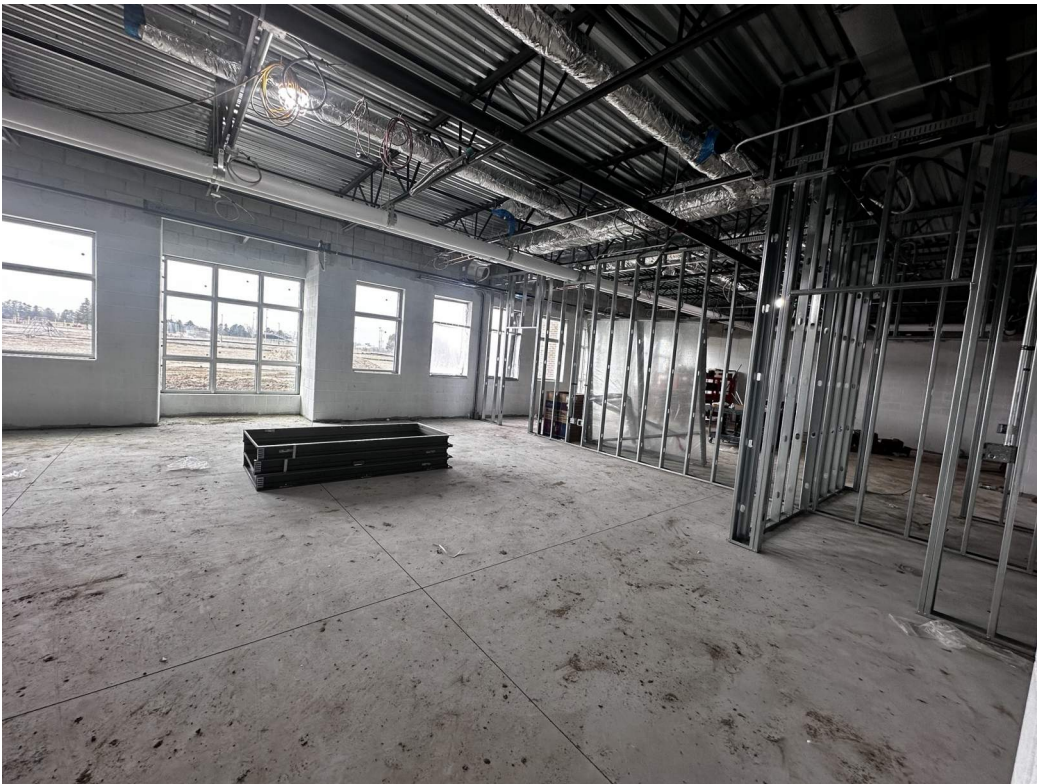


Vapor barrier preparation prior to concrete in a classroom.

Project Progress Photographs



Concrete while curing in a classroom.

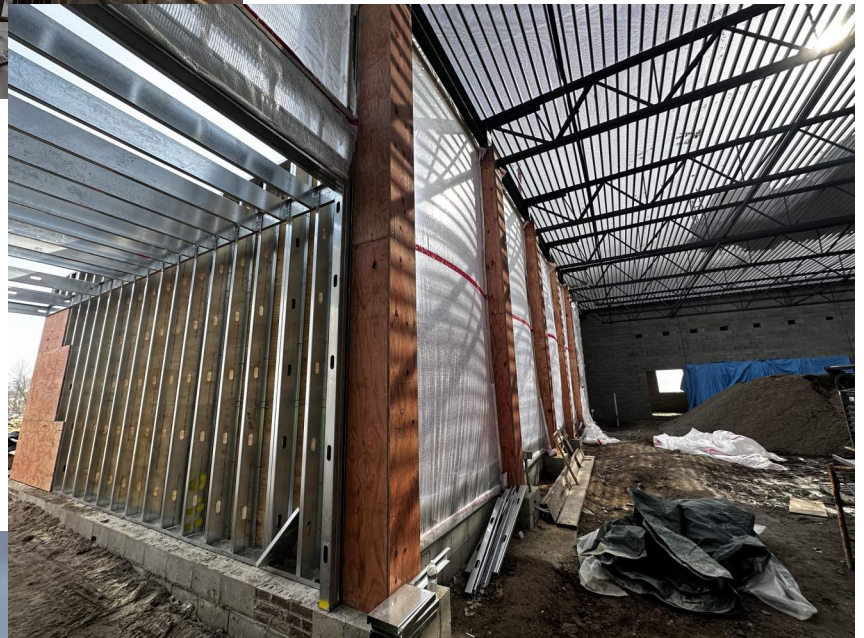


Concrete and wall framing in a classroom.

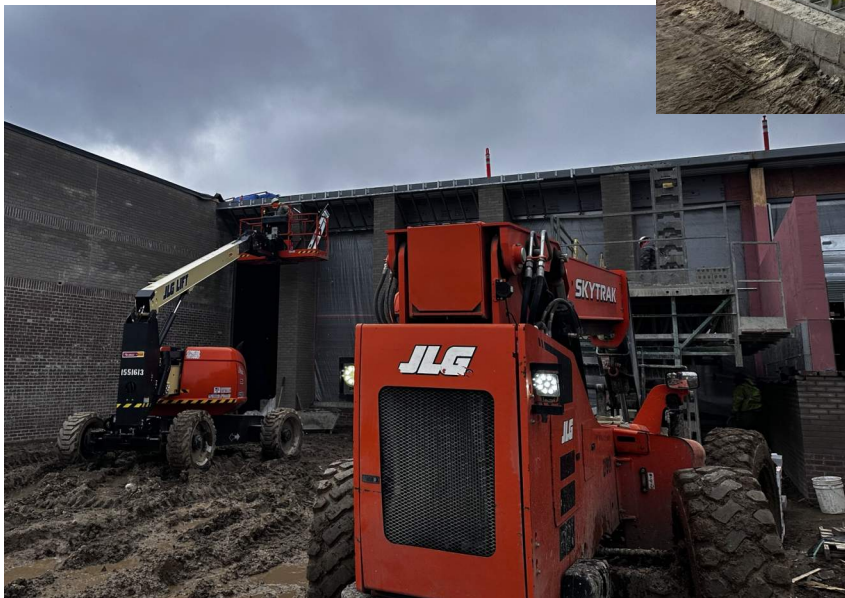
Project Progress Photographs



Interior brick veneer at a west side entrance.



Plywood on columns and framing at canopy on east side of building.



Brick veneer install at columns on east side of building.